

2020-2021

Sci-Tech Discovery Center

EDUCATOR PROGRAM GUIDE



NOW WITH
VIRTUAL
PROGRAMMING
OPTIONS



Sci-Tech Discovery Center EDUCATOR PROGRAM GUIDE

[illegible]

Sci-Tech Discovery Center EDUCATOR PROGRAM GUIDE



Dynamic educators provide hands-on STEM learning to your group.



**PROGRAMS
AT SCI-TECH**



**OUTREACH
AT YOUR SITE**



**VIRTUAL
PROGRAMS**

Contact Us at bookit@scitechdiscovery.org or 972-546-3050 x106



ABOUT SCI-TECH

MIND STRETCHING FUN®

That is what Sci-Tech Discovery Center delivers through hands-on discovery experiences that spark a lifelong interest in STEM and help equip our area's children with critical skills. At Sci-Tech, we offer a wide variety of informal educational experiences for classes, groups and families through interactive exhibits and programs, field trips, camps, parties, and special events.

MISSION

Sci-Tech Discovery Center provides dynamic educational experiences that inspire people of all ages and backgrounds to embrace discovery and innovation through the active exploration of science, technology, engineering, and mathematics (STEM).

HISTORY

Sci-Tech became a non-profit organization in 2004 and has proudly served the community to spark interest in STEM learning and help equip our area's kids with critical skills. In 2010 Sci-Tech opened its doors in Frisco to offer engaging hands-on exhibits, field trips, STEM and Maker workshops, summer discovery camps, birthday parties, scouting badge workshops, Pre-K and homeschool programs. We also take learning programs on the road to visit schools and groups and began offering virtual programs in 2020.

PLAN A SPECIAL EVENT

AT OUR CENTER, AT YOUR SITE, OR MEETING YOU VIRTUALLY

There are many opportunities and programs that will fit your curriculum and meet TEKS (Texas Essential Knowledge and Skills). We welcome your class, family, or group to our site in Frisco, or our educators can bring hands-on STEM learning to you!

AFTER HOUR FACILITY RENTALS ARE AVAILABLE FOR:

- Family STEM Nights
- PTA fundraisers
- Group celebrations
- Graduation parties
- Private school functions
- Business mixers

EVENTS INCLUDE:

- Full access to our exhibit galleries, multi-purpose rooms and Discovery Stage
- Customizable programs with activity stations, live stations, live shows, team challenges and more
- MakerSpace Team Building programs





PLAN YOUR PROGRAM

Location

8004 North Dallas Parkway Ste. 100

in the Frisco Discovery Center

(Cotton Gin Road/Main Street exit on North Dallas Tollway)

Bookit@scitechdiscovery.org

(972) 668-4735

www.mindstretchingfun.org



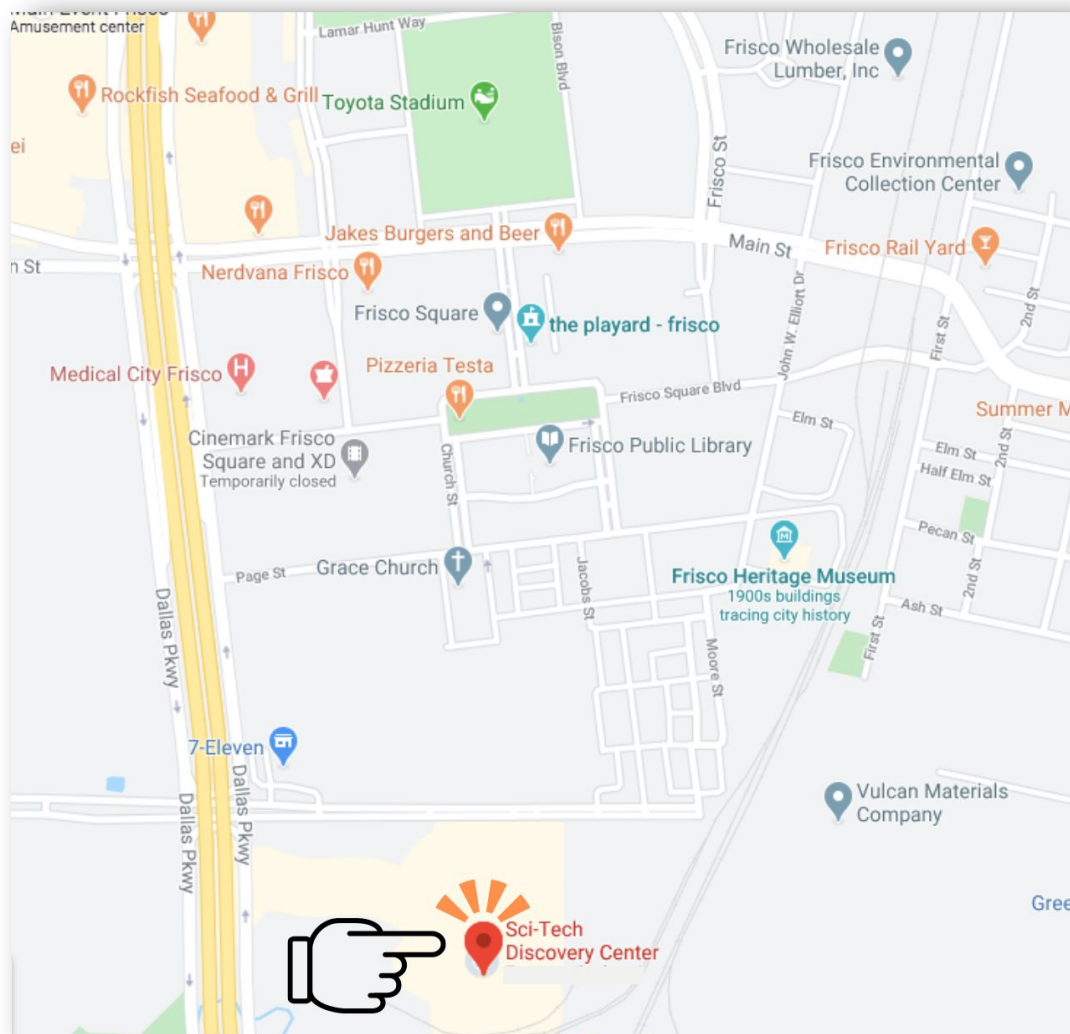
**Sci-Tech Discovery
Center**



@scitechdiscovery



@SciTechDC



MIND STRETCHING FUN®

FIELD TRIPS TO SCI-TECH



Field Trip Pricing:

Field Trip Admission: **\$7 per person**

Admission + 1 Learning Lab or WOW Stage Show: **\$12 per student**

Additional **\$5 per student** for additional Programs or Shows

One (1) Teacher is admitted for **FREE** per 10 children

WOW SHOW AND LEARNING LAB ADD-ONS

A **WOW Show** is a large group assembly featuring our Sci-Tech Educators who handle materials that can erupt, combust, and freeze! These shows are highly popular and can accommodate large groups with a varied age range.

Learning Labs are for small to medium-sized groups (up to 24 students for each session), led by our Sci-Tech Educators and offer interactive and hands-on opportunities. Large groups can be divided into rotating classroom-sized groups.

All programs include interactive learning for students and are aligned to state SCIENCE and TECHNOLOGY TEKS.



MIND STRETCHING FUN[®]



GENERAL FIELD TRIP FAQs

Here are popular questions posed by educators just like you!
Don't see the answer you're looking for?
Contact our team directly at **(972) 546-3050 x106**.

1. Is there a place to eat lunch on site?

Sci-Tech does not have an indoor eating area. We encourage outdoor picnic style lunches at the field alongside our building or the nearby Frisco Commons Park (less than 10 minutes away). Accommodations for the park must be made by contacting the City of Frisco.

2. Will the students have a chance to shop during the field trip?

Yes! Students are able to purchase items directly from our on-site Explore Store.

3. Will a field trip to Sci-Tech align with current science TEKS?

Absolutely! All PK-8 discovery programs are aligned to grade level science TEKS. In addition, a trip to the museum allows students to experience many exhibits that correlate to various TEKS.

4. How do I book a field trip, assembly, or discovery program?

Call us at (972) 546-3050 x106 to make reservations at least 2 weeks in advance.

5. How long is a field trip and when can we arrive?

Groups may choose to arrive either in the morning or afternoon. The average field trip is 90 minutes.

Supplemented field trips with WOW Stage Shows or Learning Labs will run longer. Larger groups with consecutive programs may also run longer.



PK / K EARLY EDUCATION PACKAGES AT A GLANCE

Our new Preschool/Kindergarten Early Education Packages include 4 classes that can be held in our Sci-Tech learning labs, virtually, or at your site.

Packages are ideal for small to medium-sized groups (up to 24 students for each session), led by our dynamic team of Sci-Tech educators.

Each class begins with a song to inspire young listeners to learn about the day's science; a book reading with STEM connections; a craft for each learner to take home; and a science exploration. Lessons are aligned to follow Texas Learner Outcomes for PK and Kindergarten TEKS.

PACKAGES: 4 classes that can be delivered over 4 visits

TIME: 30 minutes

PARTICIPANTS: Max 24 students per session

AT YOUR SITE:

\$750 for all 4 classes in a package.

VIRTUAL:

\$10 per child for each package.

AT SCI-TECH:

Admission + 1 package is **\$12 per child**.



MIND STRETCHING FUN

**NEW!**

PK / K EARLY EDUCATION PACKAGES

THE FOUR SEASONS - PK / K

**VIRTUAL
OPTION**

Weather is always changing, and every season has a pattern. Let's explore wind by experimenting with how it moves. How can the science of the sun change beads to a different color? Let's create erupting snow and make it rain through shaving cream like droplets in a cloud!

LIFE CYCLES - PK / K

**VIRTUAL
OPTION**

Create the life cycle of a butterfly and discover if a butterfly is an insect. Follow a mealworm to see if color or smell makes a difference before it becomes a beetle. Plant a seed to grow and observe its changes over time. Watch a chicken egg decide how density affects floatation.

WHAT'S IN THE SKY - PK / K

**VIRTUAL
OPTION**

Make your own moon dust and form craters. Create your own constellation and see how stars fizzle. Learn to form a cloud in a jar and in a microwave. Use a flashlight to experiment with shadows..

MEASURING UP - PK / K

**VIRTUAL
OPTION**

Explore height through measurement and make the tallest object with straws and playdough. Explore the weight of objects and compare volume by shape. Then try your hand at our sink or float lab challenges.



MIND STRETCHING FUN[®]

ELEMENTARY & MIDDLE SCHOOL LEARNING LABS AT A GLANCE

Learning Labs can be held at Sci-Tech or at your site (see below for new virtual options).

Programs are for small to medium-sized groups (up to 24 students for each session), led by our dynamic team of Sci-Tech educators.

All programs include interactive learning for students and are aligned to state standards. Learning Labs cover a wide range of STEM and TECHNOLOGY TEKS including Force, Matter, Energy, Organisms, Earth, Engineering. PK/K Packages follow Texas Learner Outcomes for PK and Kindergarten TEKS.

TIME: 30-45 minutes, with 15-20 min between classes
PARTICIPANTS: Max 24 students per session

AT YOUR SITE:

\$200 for first program, **\$140** for each additional program

VIRTUAL:

\$10 per child for each program.

AT SCI-TECH:

Admission + 1 Learning Labs is **\$12 per child**.

The cost is an additional **\$5 per person** for a second program.



MIND STRETCHING FUN

LEARNING LABS

Organisms & Environment

IT'S A BUG'S LIFE

1st - 4th GRADE

VIRTUAL
OPTION

Get one on one with some super mealworms as we run them through a few quick experiments to explore what we have in common. Learn how insects sense the world and learn how the scientific method helps us discover.

OWL PELLET DISSECTION LAB

1st - 4th GRADE

NEW!

VIRTUAL
OPTION

Get a little bit messy as we step into our animal lab. Discover how owls digest their prey and explore their food web as you dissect the 'pellets' that they leave behind.

REPTILE ROUNDUP

K - 6TH GRADE

Best
Seller

Meet a few of Sci-Tech's resident reptiles. Learn about their physical and behavioral adaptations. Get up close and personal with our reptile Animal Ambassadors.

COW EYEBALL DISSECTION

5TH - 8TH GRADE

VIRTUAL
OPTION

Our eyes are complex machines that allow us to do amazing things. Become practiced in lab dissections as students explore the parts of the eye first hand.

LEARNING LABS

Earth & Space

WHAT A WATERSHED 2nd - 5th GRADES

VIRTUAL
OPTION

Pollution and the water cycle come together as we “trash” our EnviroScape watershed model. See what happens next and decide how we can keep our planet clean for years to come.

ULTRA VIOLET ENERGY LAB 1st - 4th GRADE

NEW!

VIRTUAL
OPTION

Explore the power of the sun and experiment with changing variables as we add ultraviolet light to everyday objects. Discover what simple things you can do to protect your bodies from UV radiation.

Scientific Investigation

CSI Jr. 1st - 2nd GRADE

NEW!

VIRTUAL
OPTION

Can you solve the mystery of the Vegetable Garden Caper? Examine animal tracks, scat droppings, and narrow down your suspect pool as we apply scientific thinking to discover who dunnit!

ADVANCED CSI 3rd-5th GRADE

Best
Seller

Your budding forensic scientists are on the case to solve the mystery of Sci-Tech’s missing snake! Collaborating in teams, they must work together to explain clues, utilize forensic tools and analyze evidence.



MIND STRETCHING FUN

LEARNING LABS

Force & Motion

TINY TINKERERS 3rd - 5th GRADE



Try your hand at engineering a pinball game in our tinkering class for beginners. Learn how forces and physics will help your team's ball bounce and spin.

BRIDGES 4th - 6th GRADE

Investigate the forces of gravity, push, and pull as you create K'Nex bridges. Learn the architectural secrets behind some of the most famous bridges and put yours to the test.

Robotics

ROBOT ADVENTURE PK - 2nd GRADE



Help our little bots journey across magical lands as you decide their programming. Students will use Cubetto, the wooden robot that introduces kids to code and computer programming.

WORLD OF OZOBOTS 3rd - 6th GRADE

Learn to program mini bots with visual color coding. Create a big world for them to explore and control how they move with the language of color.

LEARNING LABS

Matter & Energy

SLIME TIME 1st - 5th GRADE



Mix up your own lab grade slime and put it to the test. Decide if it is a solid, a liquid, a gas or something else entirely! Children will be able to take home their new slime experiment.

NATURE'S CHEMISTRY 4th - 6th GRADE



How did people create dyes and pigments without chemistry labs? Can you change the colors by changing the pH? We know that you can!

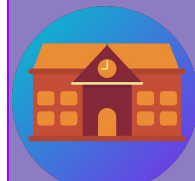
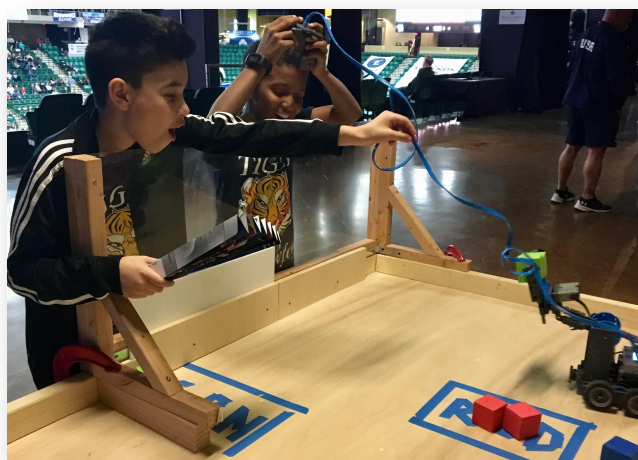
SIMPLY CIRCUITS 3rd - 5th GRADES

Break out our electricity kits and start closing those circuits! Build simple and parallel circuits and see if you can send a signal through the entire student body.

MINI MAKERS 5th - 8th GRADES



Break out our Makey Makey kits and build circuits with unusual materials that make music and more!



MIND STRETCHING FUN

WOW STAGE SHOWS AT A GLANCE

WOW Shows are assemblies for larger groups that can be held on your campus, virtually, or included with a visit to Sci-Tech. Our WOW shows explore Newton's Laws of physics, chemistry, liquid nitrogen, and combustion in an exciting and engaging presentation.

WOW Shows cover a wide range of STEM TEKS including Force, Matter, and Energy. We can accommodate large groups (up to 150 people per show) at our venue or we will work with you to meet your site's accommodations.

TIME: 30-45 minute sessions* with time between for setup

PARTICIPANTS: 25-150 students per session at Sci Tech

Up to 250 students for auditoriums at school sites.

Call for more information about size capacity at your site.

**age dependent*

AT YOUR SCHOOL:

\$325 for first show, **\$140** for each additional show

VIRTUAL:

\$10 per child for each show

AT SCI-TECH:

Admission plus 1 WOW show is **\$12 per child**

The cost is an additional **\$5 per person** for a second show

WOW STAGE SHOWS

Choose one of our exciting WOW stage shows for Early Education, Elementary and Middle School audiences.

WOW Invisible Forces



Explore the wonders of science with amazing physics demonstrations, and Newton's Laws of physics. Get blown away by Bernoulli's Principle of air pressure and more.

WOW Combustion



Learn the basics of combustion as our trained staff wows you with our fire show. See how they set solids, liquids, and gases on fire. Discover what happens when you change the variables in our fire triangle. It is explosive! *Performance includes small controlled fires.*

WOW Super Cooled

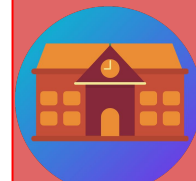


Explore the world of supercooled material science with liquid nitrogen. Discover how freezing temperatures affect balloons, balls, fruit, and flowers.

WOW Matter Matters



Spectacular chemistry experiments that explore the states of matter, their properties and their reactions to extreme temperatures. Solids, liquids, and gases will expand and contract!



MIND STRETCHING FUN



Family STEM Night

Table Tops

Tabletop Exploration Stations:

Our staff will set up hands-on exploration activity areas with 1 of the following themes.

Out of This World

NEW!

Budding astronomers and astronauts, young and old, will love our hands-on space kits. See how the angle of the sun affects light, mine for asteroids, grab hold of objects with gravity wells, and engineer landers.

Robotics Lab



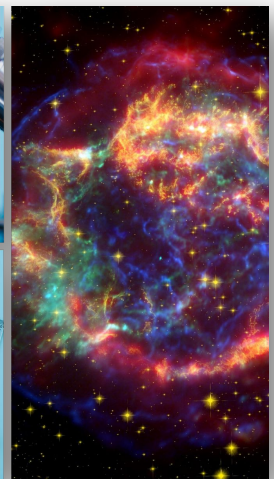
Families will have the chance to control and code our favorite robots that include LEGO, Cubetto, Ozobots, Dash, robotic arms and/or VEX robotics. Exact robots may vary depending on availability.

Chemistry Chaos

Develop dyes from natural sources, play with pH and create chemical and physical changes that bubble and fizz with our table top chemistry kits. They are great fun for the entire family!

AT YOUR SCHOOL:

\$800 for each theme chosen. Requires 2 tables and access to electricity.





Family STEM Night

Stage Shows

WOW Stage Shows:

Our educators will delight your audiences with one of our exciting WOW Shows. They demonstrate super cooled, gravity-defying, and fiery science experiments for all to see. Great for large crowds in gymnasiums.

AT YOUR SCHOOL:

\$325 per show

\$125 for each additional show

WOW Super-cooled Liquid Nitrogen Show:

Explore the world of supercooled material science with liquid nitrogen and dry ice experiments. Discover how freezing temperatures affect balloons, balls, fruit, and flowers.

WOW Invisible Forces Show:

Explore the wonders of science with amazing physics demonstrations, and Newton's Laws of physics. Get blown away by Bernoulli's Principle of air pressure and more.



MIND STRETCHING FUN[®]



Sci-Tech Discovery Center

Educational Experience Request Form

Contact Person	
Contact Email	
Contact Phone	
School / Organization	
Street Address	
City, State ZIP	

Does your school receive Title 1 funds? * ____ Yes ____ No *Your school *may* be grant recipient eligible

Field Trip Request to visit Sci-Tech Discovery Center:

Grade Level(s)	Total Number of Students	Total Number of Adults	Accommodations for Special Education Needed

Field Trips are allotted 90-minute blocks of time for exhibit exploration.

\$7.00 / Student – 1 free chaperone / 10 Students

Additional group guests are \$7.00 each

Field Trip Date Preferences			
Arrival Time Preference	____ 8:30 am	____ 9:30 am	____ 10:30 am or later

Field Trip Add-Ons While at Sci-Tech Discovery Center:

For each WOW Stage Show or Learning Lab added, we will extend your field trip by 30 minutes. If multiple programs are booked, we will provide a rotating schedule, including an outdoor lunch, if necessary. Full descriptions and grade levels found in our Educator's Guide.

(www.MindStretchingFun.org)

10-student minimum per program

WOW Stage Shows: (30-45 minute shows held at our stage for up to 100 students at a time)

- Admission plus an additional \$3 per student, per add-on

	WOW Invisible Forces		WOW Super Cooled
	WOW Combustion		WOW Matter Matters

Learning Labs: (30-45 minute classroom programs held for up to 24 students at a time)

- Admission plus an additional \$5 per student, per add-on

	It's a Bug's Life		Tiny Tinkerers
	Owl Pellet Dissection		Bridges
	Reptile Roundup		Robot Adventure
	Cow Eyeball Dissection		World of Ozobots
	What A Watershed		Slime Time
	Ultra Violet Energy Lab		Nature's Chemistry
	CSI Jr.		Simply Circuits
	Advanced CSI		Mini Makers

Outreach Requests [Virtually] or [At Your Site]:

Full descriptions and grade levels found in our Educator's Guide (www.MindStretchingFun.org)

Please circle your choice virtual or at your site

WOW Stage Shows: (30-45 minute shows held in auditoriums for up to 150 students at a time)

- At Your Site: \$325 for the first performance, \$140 for each additional performance
- Virtual: \$10 per student per performance

virtual at your site	WOW Invisible Forces	virtual at your site	WOW Super Cooled
virtual at your site	WOW Combustion	virtual at your site	WOW Matter Matters

Learning Labs: (30-45 minute classroom programs held for up to 24 students at a time)

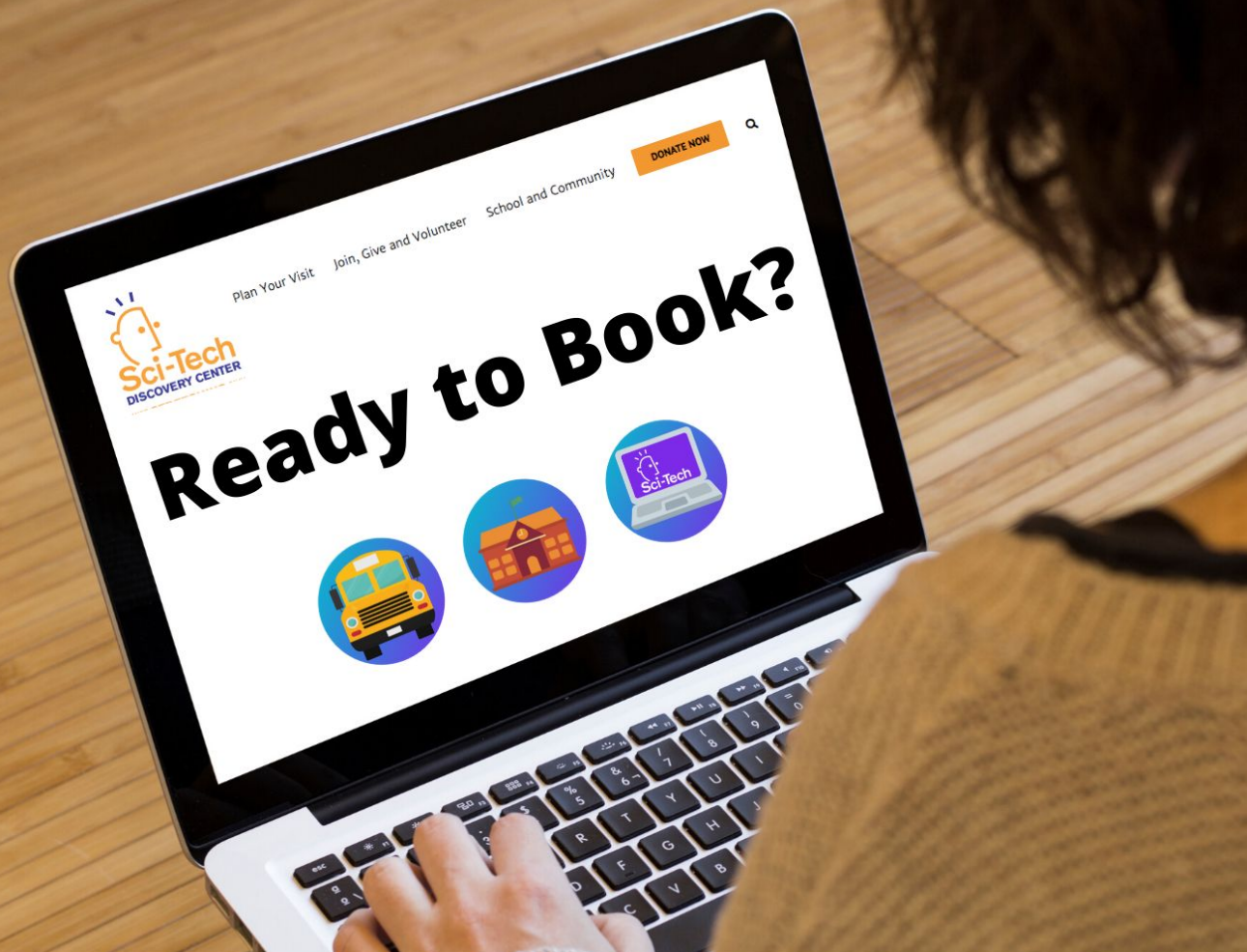
- At Your Site: \$200 for the first Learning Lab, \$140 for each additional Lab
- Virtual: \$10 per student per Lab

virtual at your site	It's a Bug's Life	virtual at your site	Tiny Tinkerers
virtual at your site	Owl Pellet Dissection	at your site	Bridges
virtual at your site	Reptile Roundup	at your site	Robot Adventure
virtual at your site	Cow Eyeball Dissection	at your site	World of Ozobots
virtual at your site	What A Watershed	virtual at your site	Slime Time
virtual at your site	Ultra Violet Energy Lab	virtual at your site	Nature's Chemistry
virtual at your site	CSi Jr.	at your site	Simply Circuits
at your site	Advanced CSI	at your site	Mini Makers

Preschool / Kindergarten Learning Lab Packages: (4 individual 30-45 minute classroom programs held for up to 24 students at a time)

- At Your Site: \$750 for the entire 4 class package
- Virtual: \$10 per student per Lab

virtual at your site	The Four Seasons	virtual at your site	What's in the Sky
virtual at your site	Life Cycles	virtual at your site	Measuring Up



Requests are not guaranteed outreach reservations.

Outreaches are only guaranteed once a signed contract and deposit have been received.

Please submit requests to Rob Gilmore, Guest Services Director, at bookit@scitechdiscovery.org

If you have any questions, please call 972-546-3050 x106.

Name of Person Making Request _____
First Last



Find us on Social Media!

www.mindstretchingfun.org



**Sci-Tech Discovery
Center**



@scitechdiscovery



@SciTechDC

MINDSTRETCHING FUN!®